

TouchScan Large Format Scanners

TouchScan is a totally new approach to wide format document scanning and reproduction. Unlike Traditional solutions, TouchScan requires very little imaging knowledge to get great results! This can be attributed to a easy-to-use software interface combined with a robust color engine based on AZTEK®'s patented technology. Making TouchScan able to service the Fine Art, Photographic, CAD, Education and environments where speed and quality reproduction is a necessity. What is also great about TouchScan is that it is expandable to meet your image reproduction needs..

Touch Scan touts an onboard wizard that guides users through a few simple steps, which quickly and easily lead to professional quality scanned reproductions.

It's so easy to use, even the most novice user can produce professional quality scanned images in a matter of minutes. For the more experienced user, Touch Scan offers an advanced feature mode that allows users to fine tune their settings at any point during the scan process.



TouchScan 44" Wide Format Scanner

Save Money & Time

TouchScan's ease of use allows for your scans to be done in-house without extensive training or expensive out-sourcing. TouchScan accomplishes this through its intuitive software interface which leads you through the process from start to finish. A built in customizable Wizard allows any user to start being productive within minutes. Additionally, advanced features available in an advanced mode allow you to fine tune the settings on your project through a complete image and project tool suite during any point of the scan process.

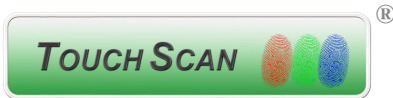


Scanned Photography in image provided by Enrol Higgins © 2009

Help Assistant

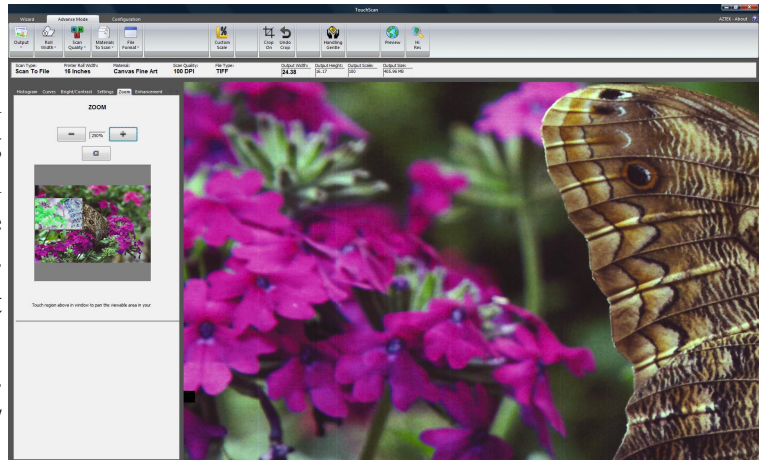
In the case that you need direction with a feature within the software, TouchScan includes an on screen video assistant. The TouchScan assist is available at all times of operation of the software. Simply select the topic you wish to learn more about and the assistant will play the corresponding video including audio to direct you.





Configure to your Needs

Whether you currently have the need for scan to print or at some later point need copying capability. TouchScan can be purchased with varying capability from a standalone software to drive your existing scanners, or as a complete pre-configured system to run straight from the box. The all in one option include: Scanner (that fits the needs of your document size requirement), Touch Panel System/Touch-Scan Software, and an Integrated Stand with an Epson 44" Printer.



Advantages at a glance

- No Need for Highly Trained Operators (Ease of Use)
- Self Sufficiency is Cost Effective (No more outsourcing)
- Integrated Products Use Less Space (Smaller foot print due to a all in one approach)
- Built on proven technology (Aztek's Digital Photo Lab®) / Superior Image Quality
- Increase Revenue Stream
- Lower Starting Costs
- Quickly save and recall scanning/printing session selections - time saving
- Fully customizable to fit your needs

Specifications

Touch Scan is designed to be used with a Touch Screen Monitor or Touch Screen PC running under the Multi-Touch version of Windows 7 or XP and Vista Operating Systems. (Also supports standard keyboard and mouse operation) Touch Scan is compatible with all Aztek wide format scanner's including GTCO CalComp® ScanPlus™ 6 and ScanPlus 7 Series Wide Format Scanners as well Context Wide Format Scanners.



AZTEK, the AZTEK logo and Touch Scan are either registered trademarks or trademarks of AZTEK Incorporated in the United States and/or other countries. © 2009 AZTEK Incorporated. All rights reserved.

13765-F ALTON PARKWAY • IRVINE • CA 92618 • (949) 770-8787 • FAX (949) 770-4986 • AZTEK.COM